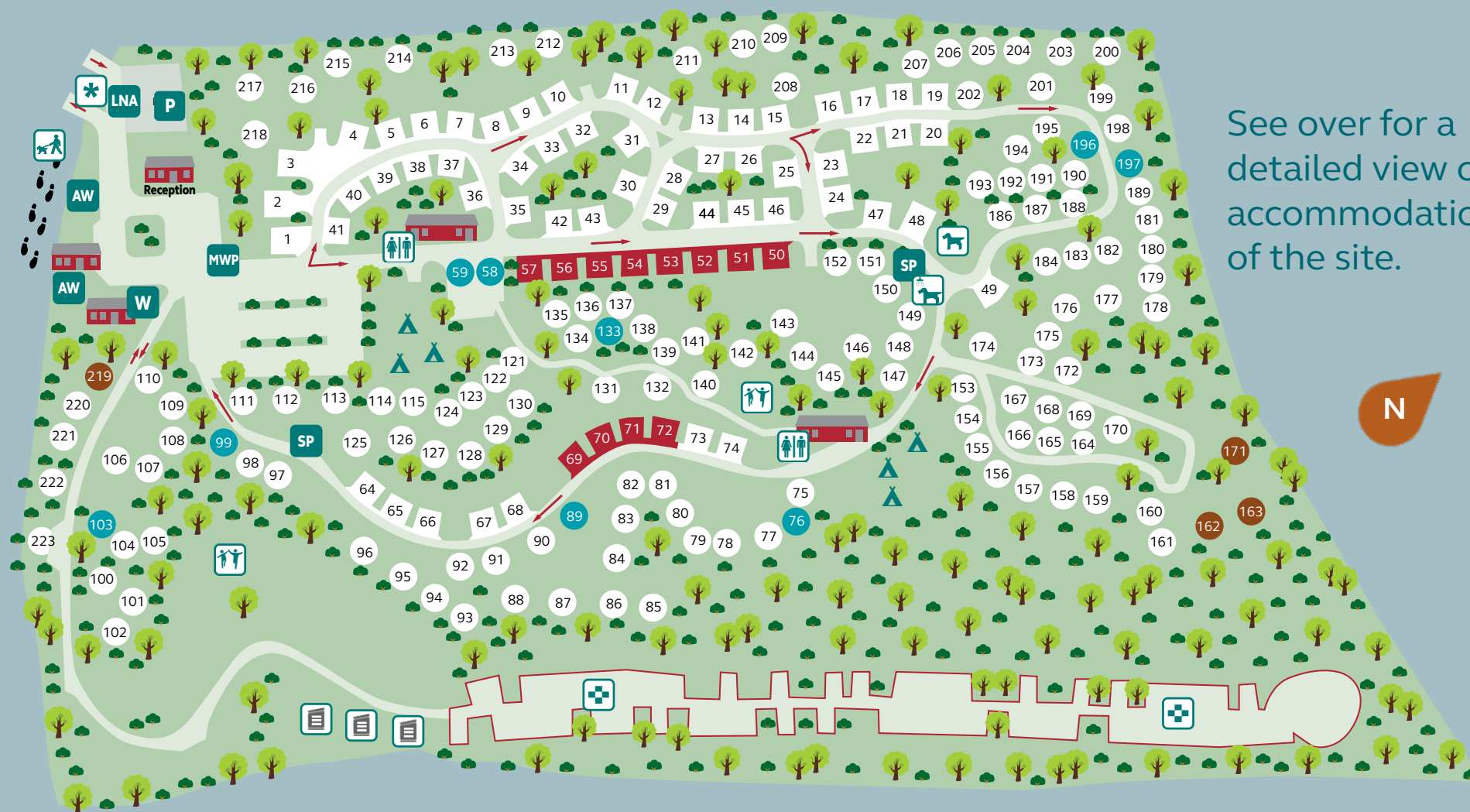


# Alderstead Heath Club Site



See over for a detailed view of the accommodation areas of the site.

## Site Map Key

	Assembly Point		Late Night Arrivals Area		Storage Compound
	Assistant Warden		Motorhome Waste Point		Tent Area
	Dog Walk		Play Area		Toilet Block
	Glamping Pods		Service Point		Warden
	Dog Stopover Point		Dog Wash		Visitor Parking

## Pitch Guide

Pitch type	Peg colour	Hardstanding	Grass
Standard with awning	White		
Standard without awning	Blue		
Serviced	Red		
Economy	Brown		
Tent	Yellow		

# Accommodation areas



## Site facilities

### Toilets and showers

Keys for access to disabled facilities and baby and toddler bathroom are available from reception. Please ensure that children are supervised by an adult at all times.

### Laundry

Prices: Washing machine £4.00, Tumble drier £1.00, Rinse & Spin £1.00 per 15min cycle. Washing sinks are also available. Please do not hang washing lines between trees or on fences.

## Safety on site

### Fire point

Please check where your nearest fire point is so you can raise the alarm if you discover a fire, make a note of where the assembly point is and read the fire action notice. Fire extinguishers are provided at the fire points. If fire breaks out, follow the Site Staff's instructions. Keep your children safe by making them aware of the danger of emergency services rushing to the scene. In the event of fire, alarm/warning bells are located around the site. The fire assembly point is located in late night arrival area.

### Supervision of children

Parents or guardians are responsible for the safety of children in their care at all times whilst on site. Play areas are never entirely risk free, so we ask children are supervised by an adult. Please remember you are responsible for your children on site.



**EXPERIENCE FREEDOM**  
FROM THE CARAVAN AND MOTORHOME CLUB